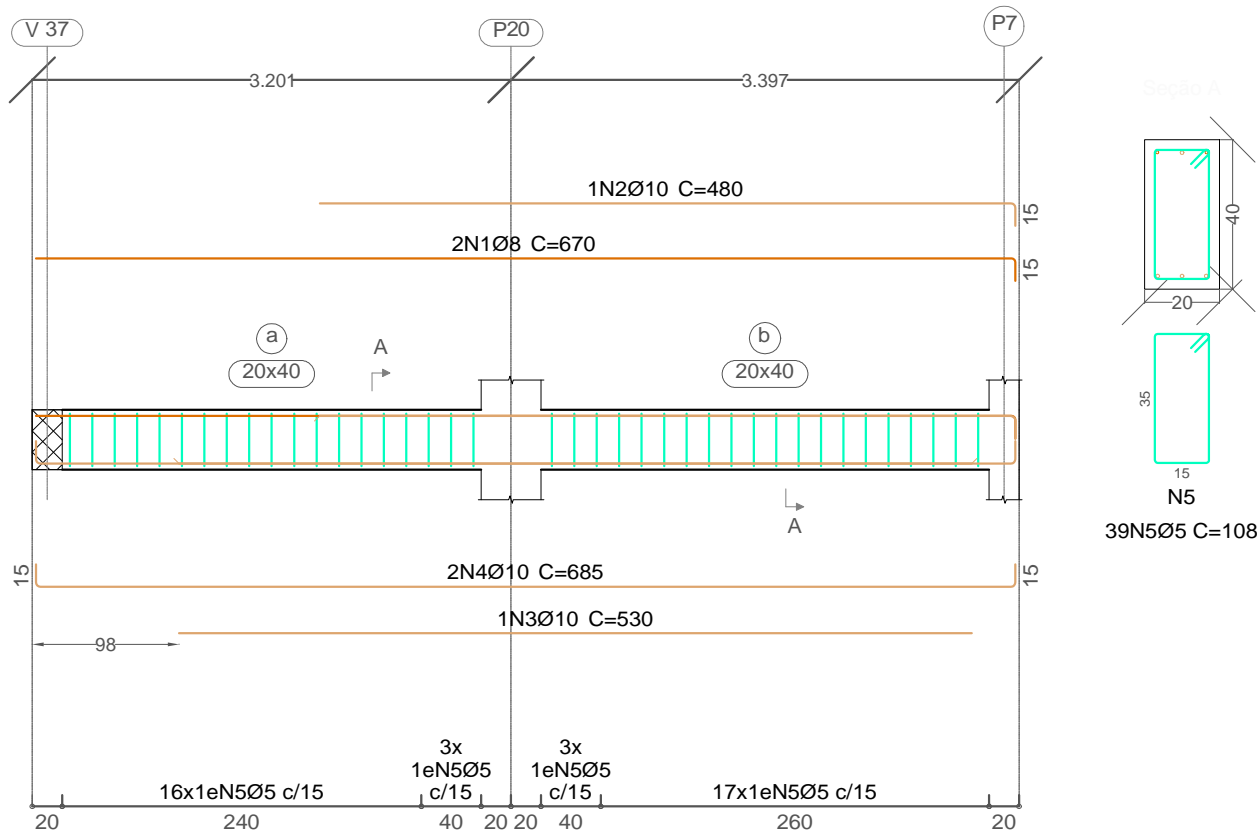


VIGAS BALDRAME TERREO

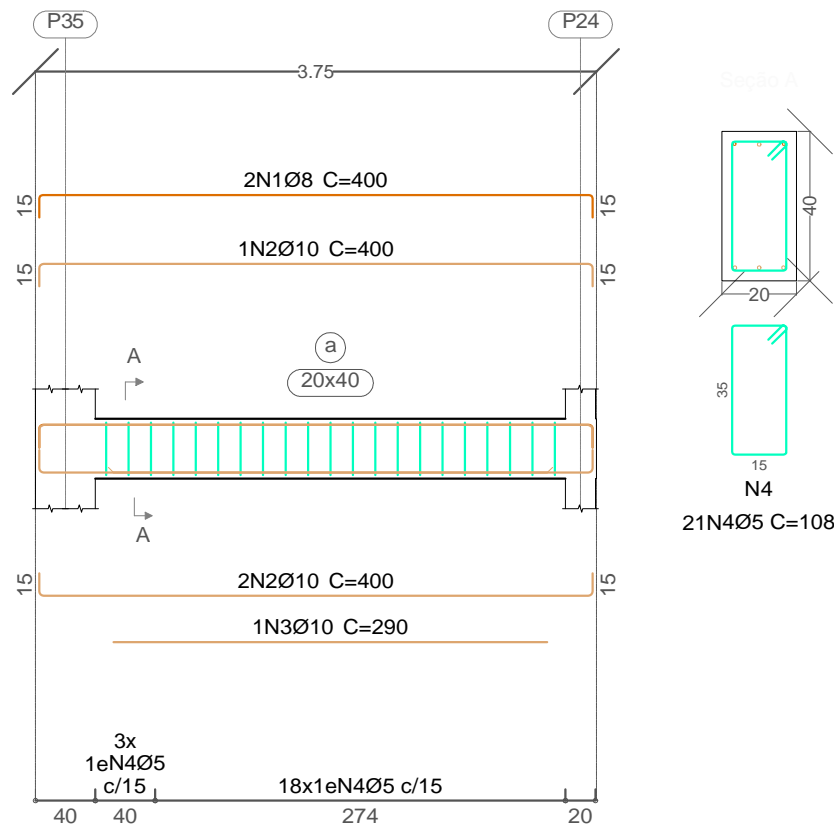
V 20

Escala vigas 1:50
Escala seções 1:20



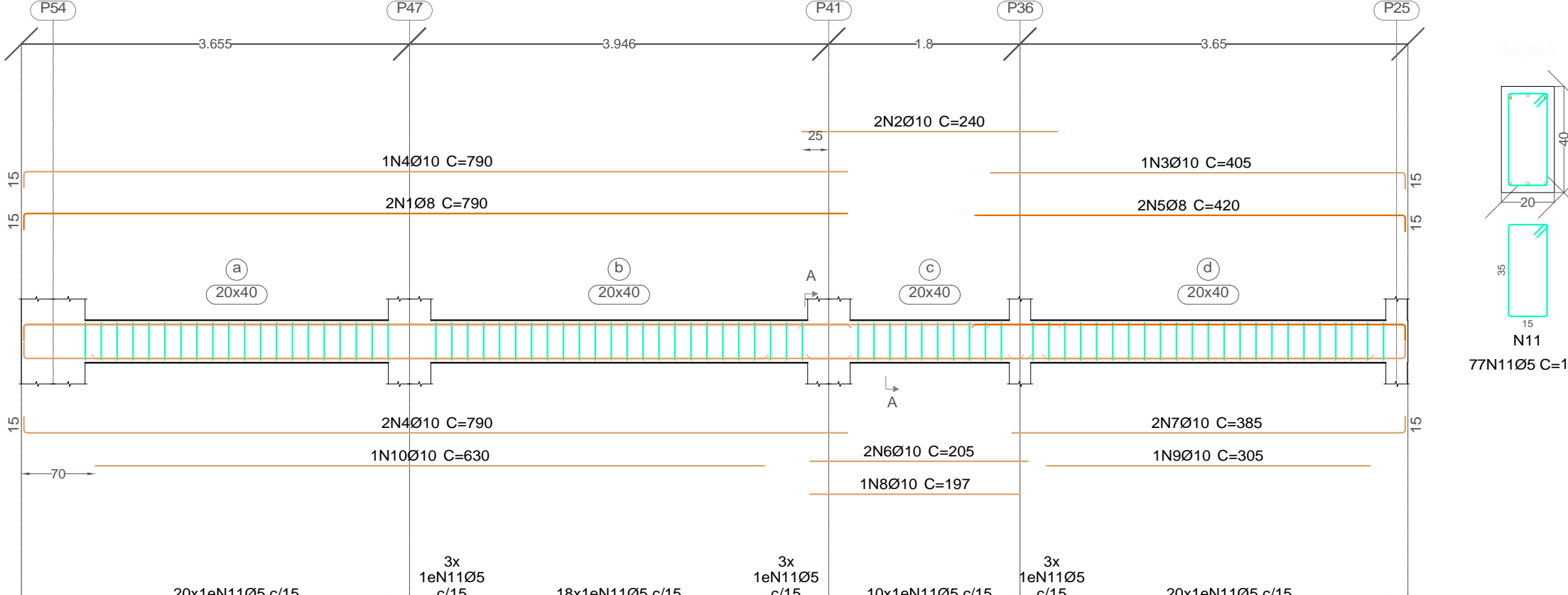
V 21

Escala vigas 1:50
Escala seções 1:20



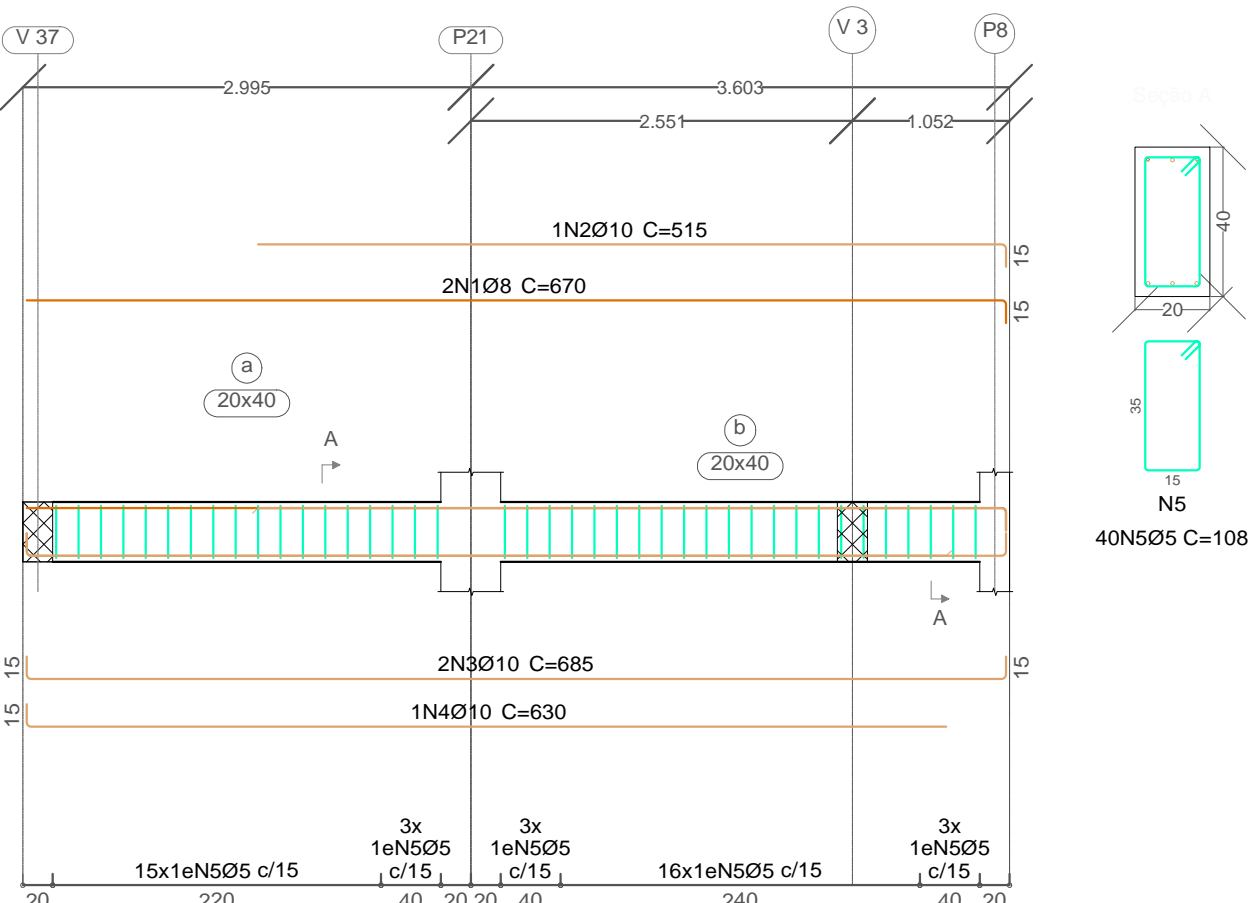
V 22

Escala vigas 1:50
Escala seções 1:20



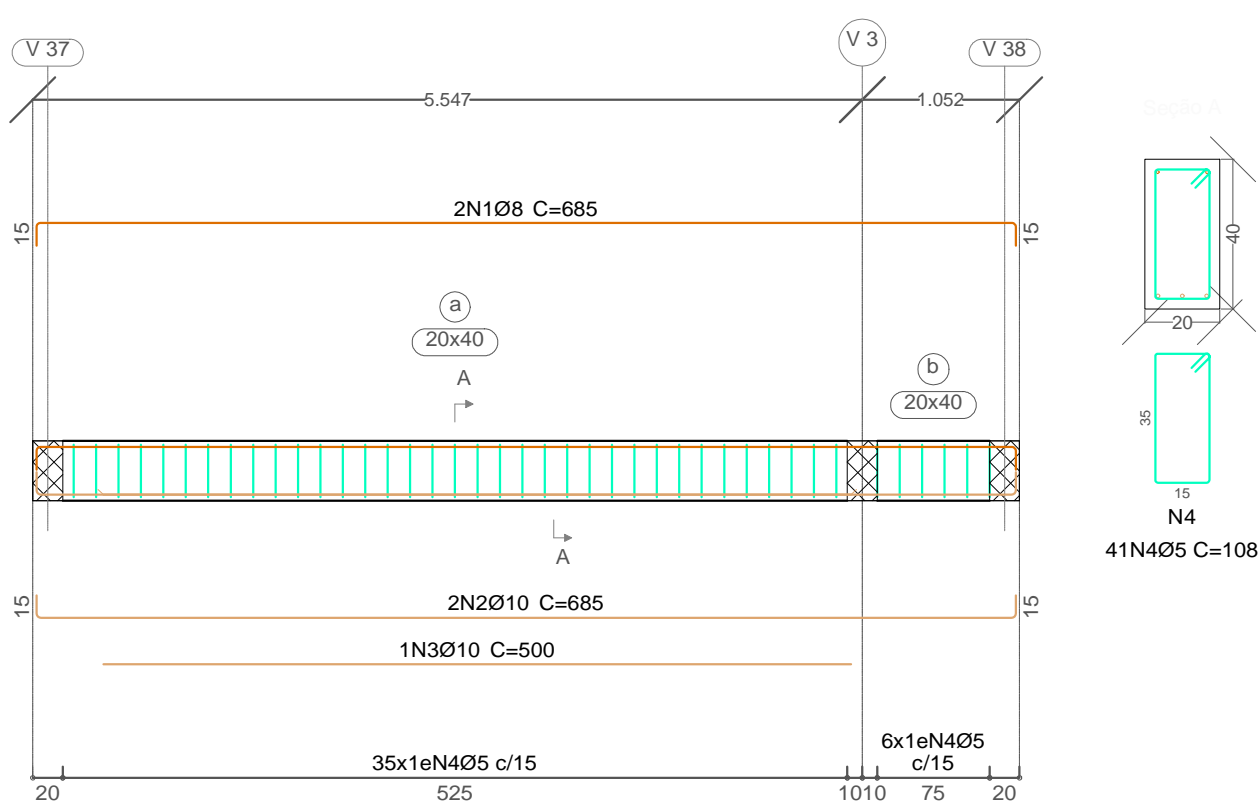
V 23

Escala vigas 1:50
Escala seções 1:20



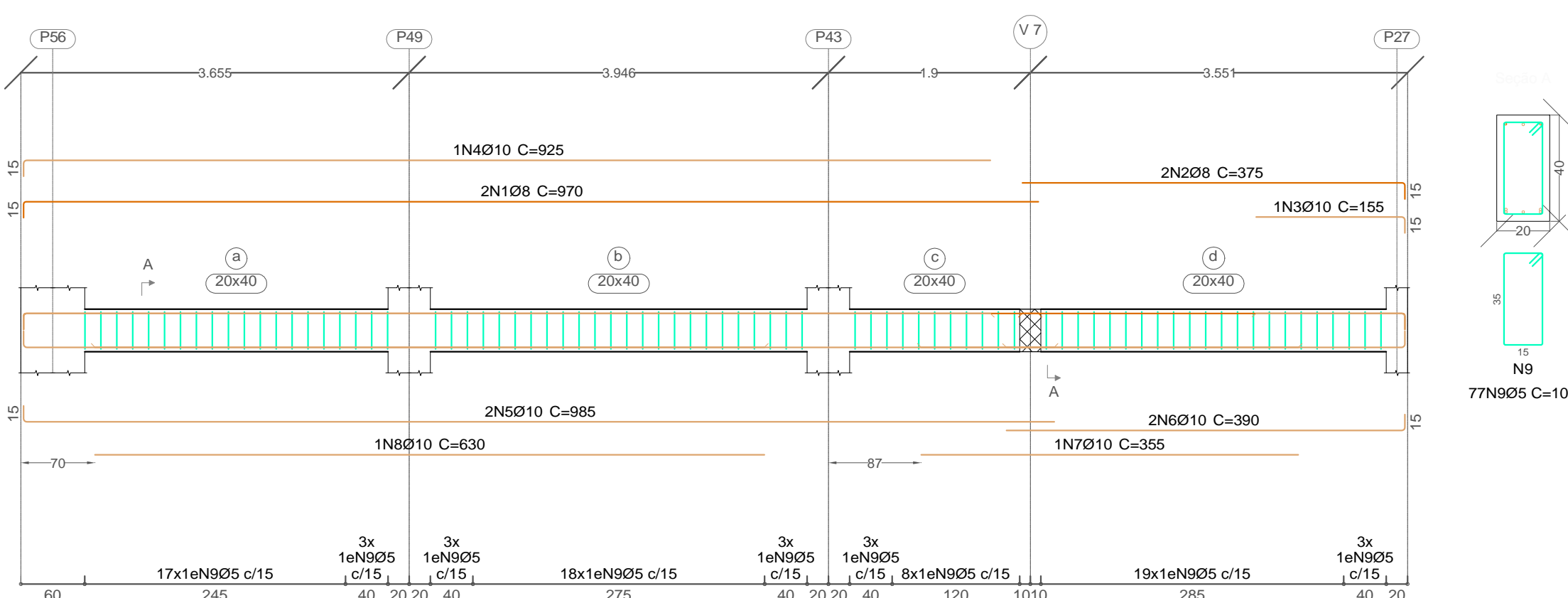
V 24

Escala vigas 1:50
Escala seções 1:20



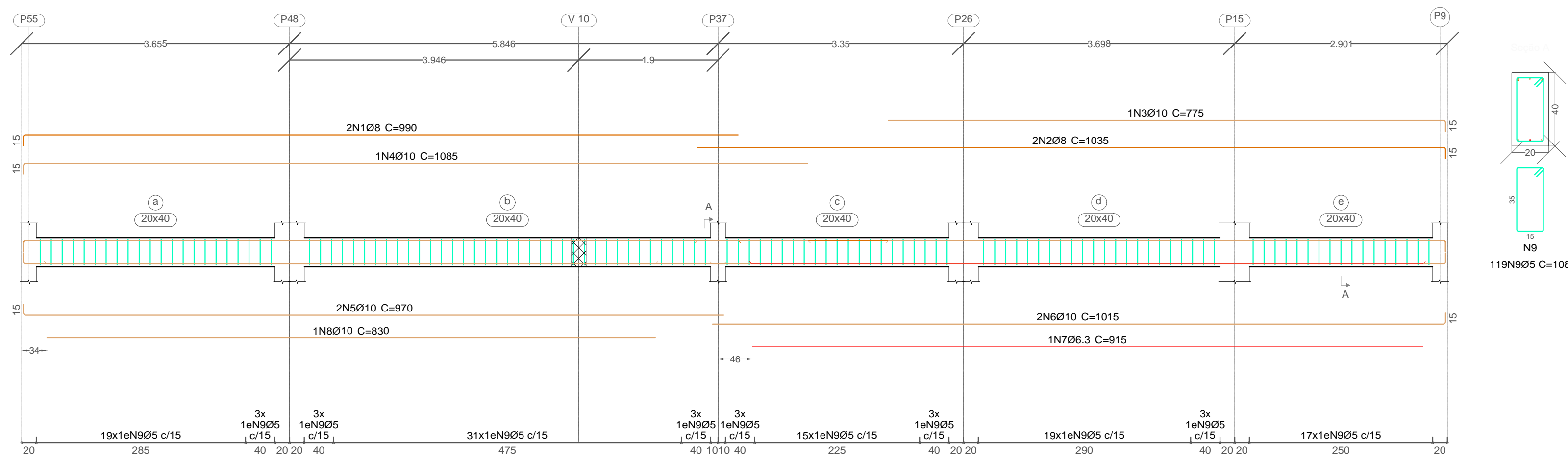
V 26

Escala vigas 1:50
Escala seções 1:20



V 25

Escala vigas 1:50
Escala seções 1:20



Elemento	Pos.	Diam.	Q.	Dob. (cm)	Reta (cm)	Dob. (cm)	Comp. (cm)	Total (cm)	CA-50 (kg)	CA-60 (kg)
V 25	1 Ø8	2	15	975				990	1980	7.8
	2 Ø8	2	15	1020	15	1035		2070	8.2	
	3 Ø10	1	15	760		775		775	4.8	
	4 Ø10	1	15	1070		1085		1085	6.7	
	5 Ø10	2	15	955		970		1940	12.0	
	6 Ø10	2	15	999.9	15	1015		2030	12.5	
	7 Ø6.3	1	15	915		915		915	2.2	
	8 Ø10	1	15	830		830		830	5.1	
	9 Ø5	119	5	98	5	108		12852		20.2
	Total+10%:								65.2	22.2
V 24	1 Ø8	2	15	654.8	15	685		1370	5.4	
	2 Ø10	2	15	654.8	15	685		1370	8.4	
	3 Ø10	1	15	500		500		500	3.1	
	4 Ø5	41	5	98	5	108		4428		7.0
Total+10%:									18.6	7.7
V 23	1 Ø8	2	15	654.9	15	670		1340	5.3	
	2 Ø10	1	15	500		515		515	3.2	
	3 Ø10	2	15	654.9	15	685		1370	8.4	
	4 Ø10	1	15	615		630		630	3.9	
	5 Ø5	40	5	98	5	108		4320		6.8
Total+10%:									22.9	7.5
V 22	1 Ø8	2	15	775		790		1580	6.2	
	2 Ø10	2	15	240		240		480	3.0	
	3 Ø10	1	15	390	15	405		405	2.5	
	4 Ø10	3	15	775		790		2370	14.6	
	5 Ø8	2	15	405	15	420		840	3.3	
	6 Ø10	2	15	205		205		410	2.5	
	7 Ø10	2	15	370	15	385		770	4.7	
	8 Ø10	1	15	197.5		197		197	1.2	
	9 Ø10	1	15	305		305		305	1.9	
	10 Ø10	1	15	630		630		630	3.9	
Total+10%:									48.2	14.4
V 21	1 Ø8	2	15	370	15	400		800	3.2	
	2 Ø10	3	15	370	15	400		1200	7.4	
	3 Ø10	1	15	290		290		290	1.8	
	4 Ø5	21	5	98	5	108		2268		3.6
Total+10%:									13.6	4.0
V 20	1 Ø8	2	15	654.9	15	670		1340	5.3	
	2 Ø10	1	15	465		480		480	3.0	
	3 Ø10	1	15	530		530		530	3.3	
	4 Ø10	2	15	654.9	15	685		1370	8.4	
	5 Ø5	39	5	98	5	108		4212		6.6
Total+10%:									22.0	7.3
V 26	1 Ø8	2	15	955		970		1940	7.7	
	2 Ø10	2	15	360.1	15	375		750	3.0	
	3 Ø10	1	15	140		155		155	1.0	
	4 Ø10	1	15	910		925		925	5.7	
	5 Ø10	2	15	970		985		1970	12.1	
	6 Ø10	2	15	375	15	390		780	4.8	
	7 Ø10	1	15	355		355		355	2.2	
	8 Ø10	1	15	630		630		630	3.9	
	9 Ø5	77	5	98	5	108		8316		13.1
	Total+10%:								44.4	14.4
								Ø5:	0.0	77.5
								Ø6.3:	2.4	0.0
								Ø8:	60.9	0.0
								Ø10:	171.6	0.0
								Total:	234.9	77.5

NOTAS

- A EXECUÇÃO DO ESCORAMENTO, DO RE-ESCORAMENTO E DO CIMBRAMENTO DEVE RESPEITAR A NBR 15696.
- RETIRAR ESCORAMENTO APÓS 28 DIAS DA CONCRETAGEM
- QUALQUER MODIFICAÇÃO OU DÚVIDA NO PROJETO DEVERÁ SER IMEDIATAMENTE INFORMADA AO PROJETISTA ESTRUTURAL

COBRIMENTOS MÍNIMOS

LAJE E ESCADA: 2,5cm
PILAR: 2,5cm
PILAR (CONTATO COM O SOLO): 2,5cm

CONCRETO

fck = 30 MPa

AÇO: CA-50 E CA-60



PREFEITURA MUNICIPAL
SANTO ANTÔNIO DE LEVERGER

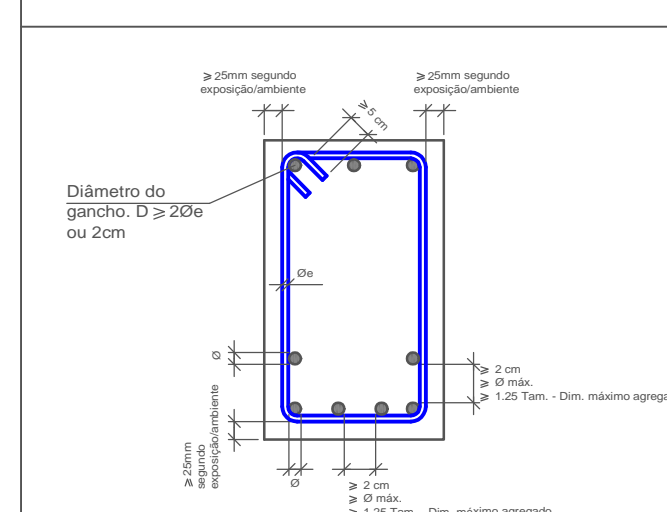
VIGAS

V 20 V 21 V 22 V 23
V 24 V 25 V 26

RESP. TÉCNICO: Maycon Henrique Moraes Rodrigues
CREA - MT: 51648

PROPRIETÁRIO: Prefeitura Municipal de Santo Antônio de Leverger
CNPJ: 03.507.555/0001-12

COBRIMENTOS E ESPAÇAMENTOS ENTRE BARRAS EM VIGAS



06

06 - 31